

## SysexFiler -- Triton to Kronos Combi Conversion by Tim Godfrey

SysexFiler is a general purpose Sysex manager for Windows, extended to perform specific conversion tasks for a few synths. It is not a polished program, as it was not intended for general use. It is non-intuitive, so please read the steps below.

This document explains how to convert Triton Studio (and compatible) Combi's to the Kronos

### Notes:

This program does not convert programs, or even try to map your combi to use any Kronos programs. You will have to locate the "best fit" Kronos programs for your Timbres individually.

This program does not map Arpeggiators either – they are left in the state of the Kronos Init Combi. The Karma details are proprietary, so no mapping was possible.

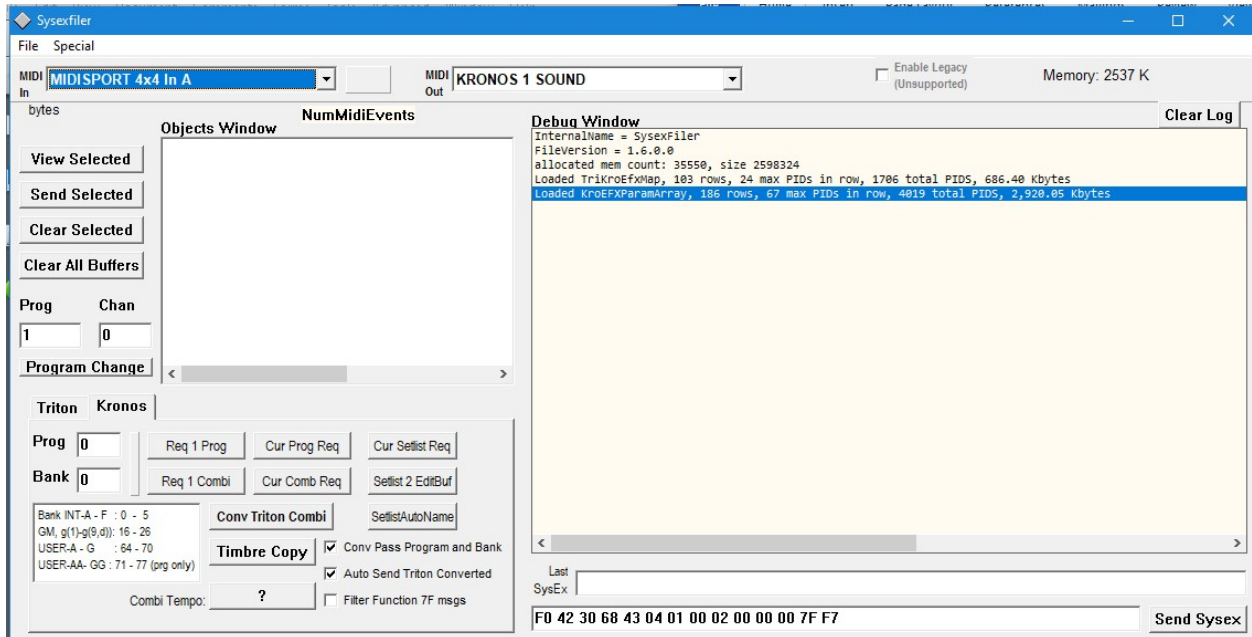
Effects are mapped with a best-fit approach, but they should be reviewed to be sure they are appropriate.

The program simply provides a placeholder Combi with splits, layers, MIDI channels, etc already set for you. This still saves a lot of work for complex Combis with splits, zones, and layers.

### Installation:

This program does not use an installer and does not make changes to your system. Copy the contents of the ZIP to a folder you create wherever you would like. Run the executable "SysexFiler.exe".

## Startup:



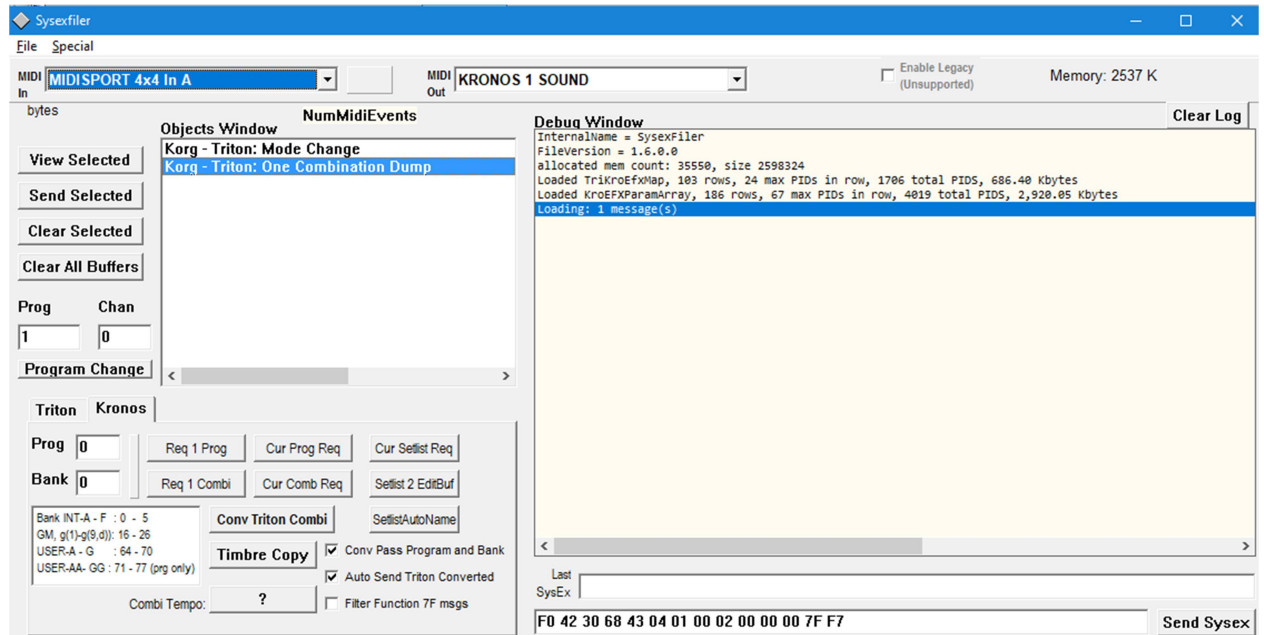
Configure the Input and Output MIDI ports to match your devices. For Triton to Kronos conversions, the Input MIDI should be connected to the Triton, and the Output MIDI to the Kronos. (Note: you can also perform conversion by loading and saving Sysex files if you can't use MIDI). Use the USB MIDI driver for the Kronos if possible (it will probably show up as "KRONOS 1 SOUND").

Step 1:

Load a Triton Studio Combi (or Combi Bank):

MIDI way - from Triton UI select: Global, P1: MIDI, (menu) Dump Combination.

File way – in SysexFiler: File / Open Sysex and load from disk.

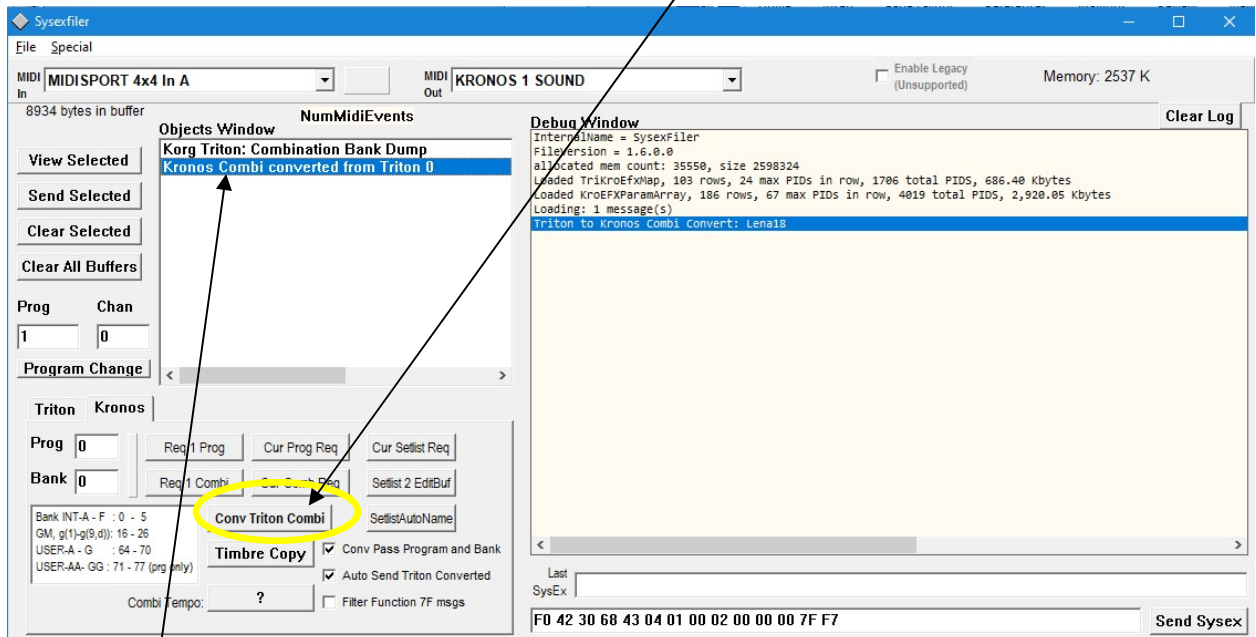


Now the Combi has been loaded. Select it in the Objects Window by clicking on it.

Step 2:

Perform the Conversion –

- 1) Select the Combi (will highlight blue)
- 2) Click on “**Conv Triton Combi**” on the Kronos tab.

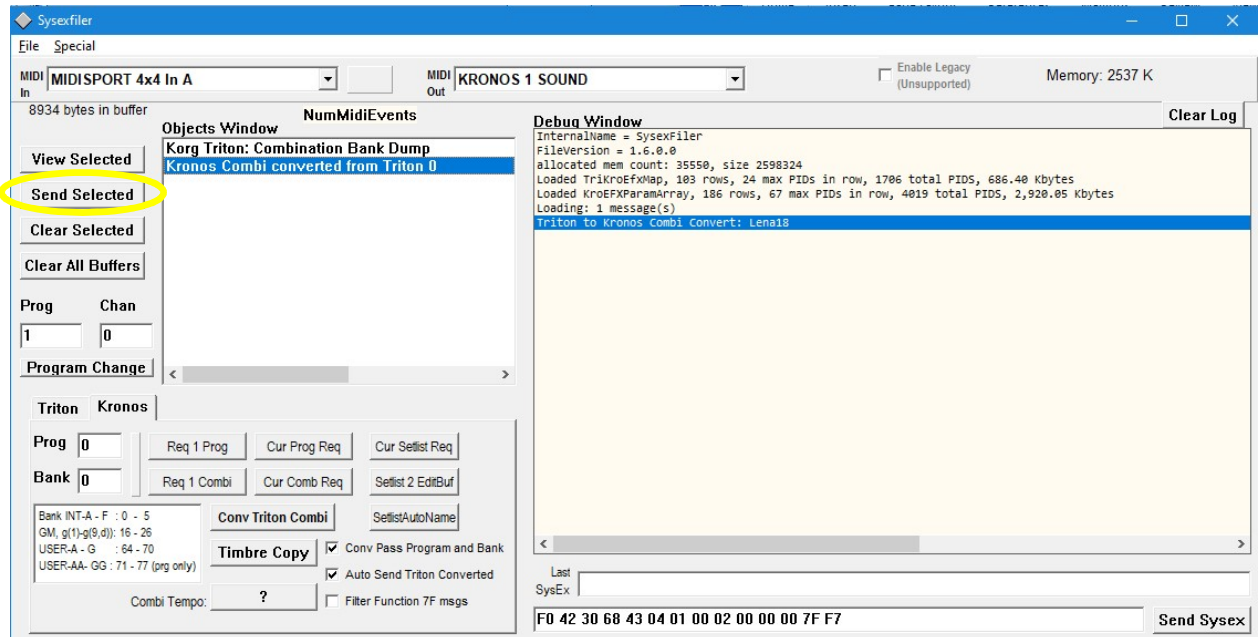


A new Object will appear: “Kronos Combi converted from Triton”.

Select the new Kronos Combi with the mouse.

Step 3:

Click on “Send Selected” button to send Combi to Kronos:

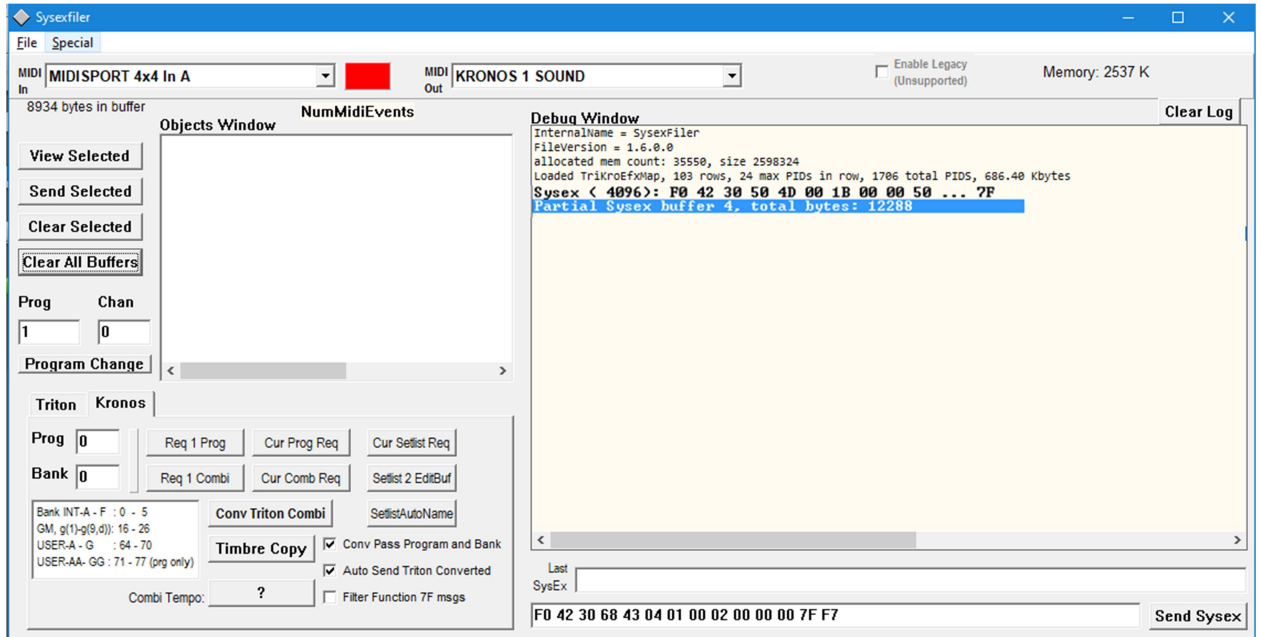


The Combi will be placed in the Kronos Edit Buffer. It will not be written to memory or saved until you save it where you want it on the Kronos.

At this point you can also save the Kronos Combi Sysex to the disk using File / Save As.

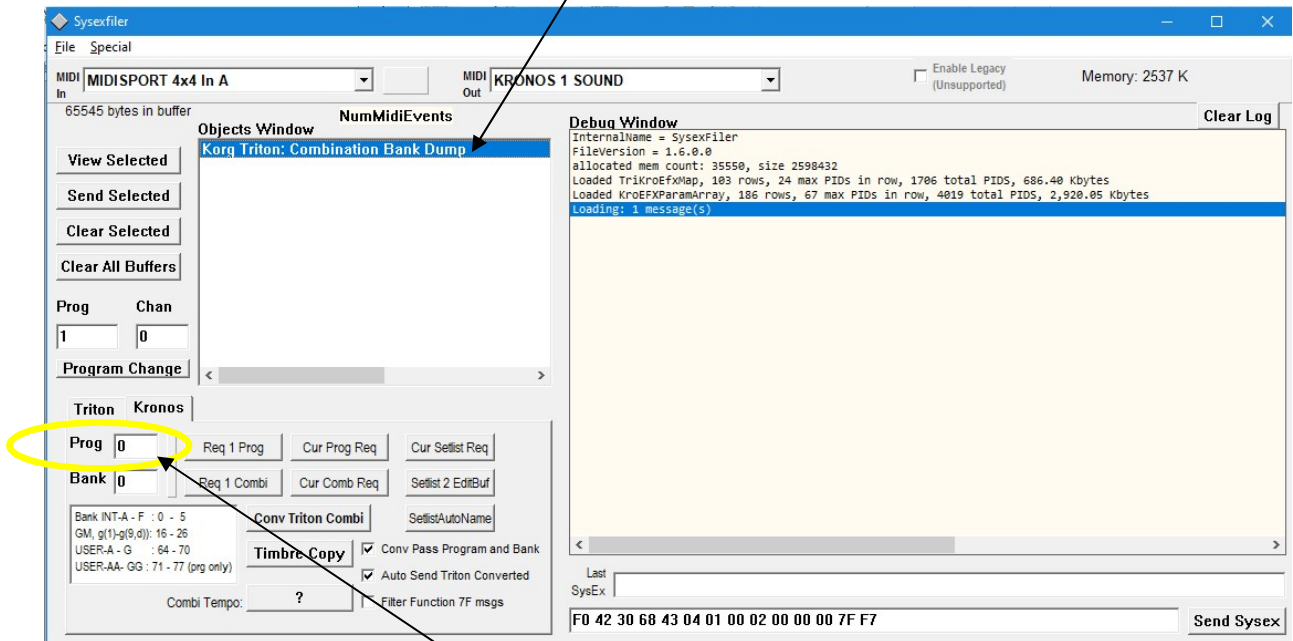
## Options:

It is also possible to load a full Triton Bank at once. Send from the Triton UI, choosing “Dump Combination”, “Bank”, and picking the desired bank. It takes a while for the data to be sent - while MIDI data is loading SysexFiler will show a red progress bar between the MIDI device selectors:



During the time data is being sent, there is a red indicator by the MIDI input selector, and the number of buffers of MIDI Data (events) are counted.

When the full Bank has been loaded, it will appear in the Objects Window:



As before, select it. Important: If you have loaded a full combi bank from the Triton, you must to select the specific Combi to be converted. Use the “Prog” field to enter the Combi’s number in the bank.

The program does not convert a whole bank at once since manual intervention is required for each. The Kronos 1 does not have a unified “combi bank” data structure. If you request the Kronos to dump a bank of Combis, it will send 128 separate Combi messages.

Also by writing to the Edit Buffer, the program does not overwrite anything in the memory of the Kronos.

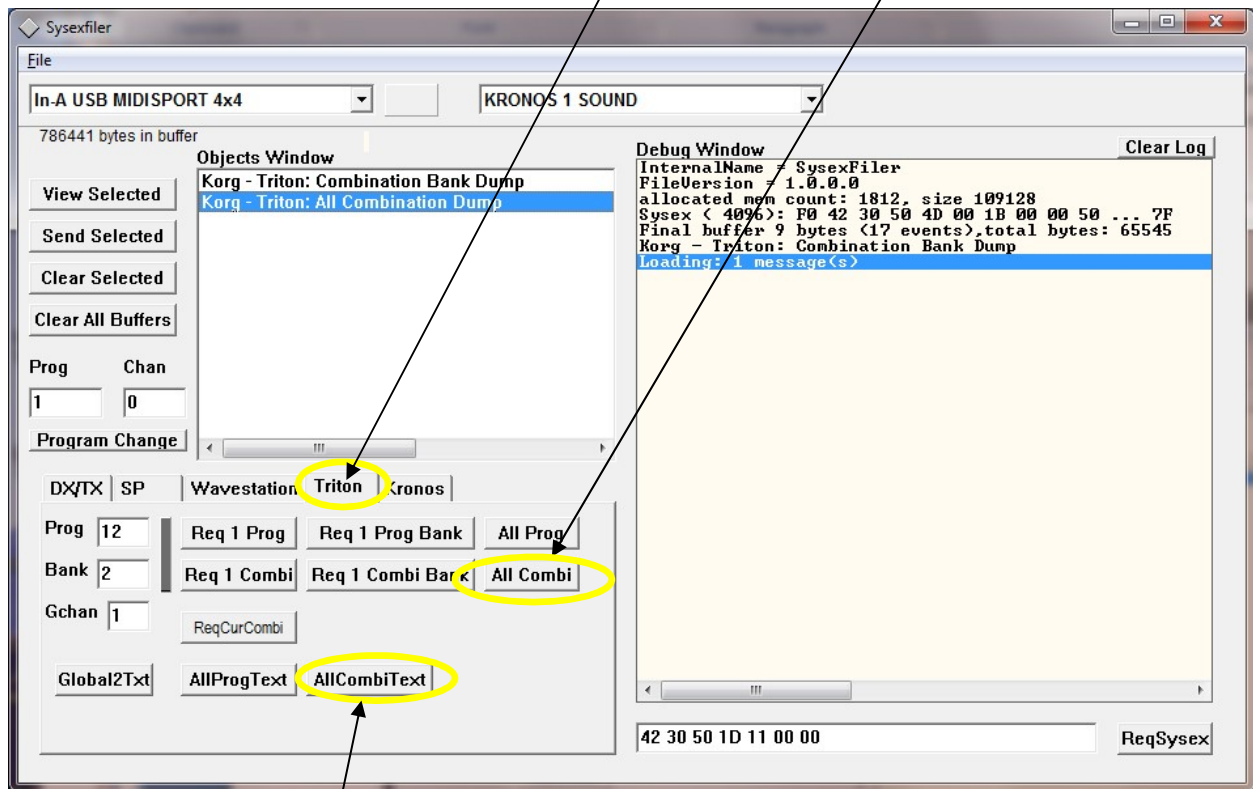
### Notes – Combi and Program names: (this section not updated for V1.6 UI changes)

A file called “Tri-Kronos-Combi-Convert-Log.txt” is saved in the Sysexfiler folder. It lists the Combi name, the Triton effect settings, and the Timbre names and locations on the Triton. This is very handy when re-creating the Effects and finding appropriate programs on the Kronos. This file is not overwritten, but is appended for each conversion. If you have a text editor that will re-load the file when it is changed, it is handy to keep it open as you are converting Combis .

Another file called “Tri-Kronos-Combi-Parse.txt” is also saved in the SysexFile folder. This is primarily debugging information, but provides more details on the Combi details from the Triton. It is updated (overwritten) every time the Kronos Conversion button is clicked, so copy and save any versions that you want to keep.

To make mapping (display) of the Triton Combi and Program names possible, it is required for you to create name lists based on your particular Triton Studio that can be used for the mapping. (The files included with the distribution are from my Triton Studio, which will not be correct for yours).

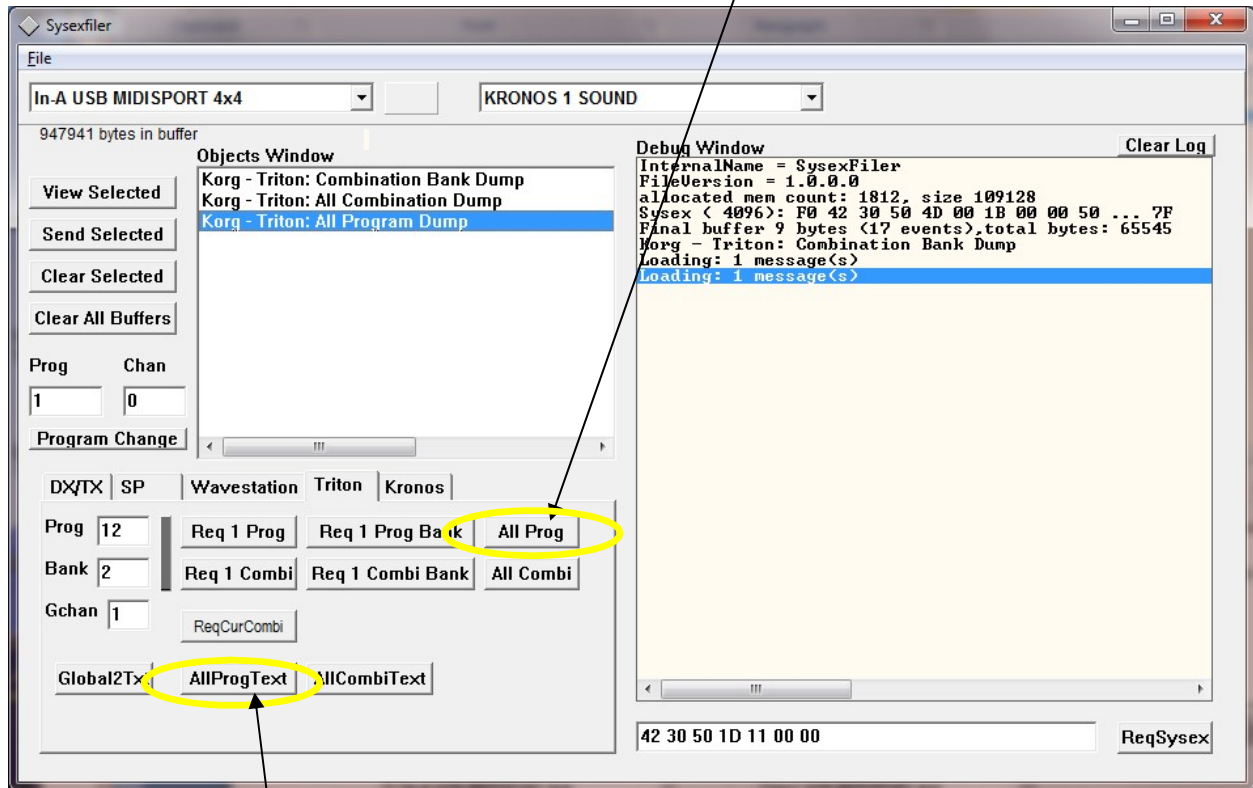
To create your own name mapping files, first Click on the **Triton** tab, then click **"All Combi"** to receive an All Combination Dump from the Triton. (Note that the MIDI out will have to be connected to the Triton Studio for the All Combi Dump Request to take effect. The figure below shows the Kronos selected on the MIDI out port, which will not work.) The dump process takes a really long time with legacy MIDI (there is no USB on the Triton Studio), so start it when you are ready to take a break.



Once the All Combination Dump is available in the Objects Window, click it to highlight. You should use File Save As to save it to disk so you won't have to wait for MIDI again. Then click on **"AllCombiText"** button. This will save out a file called TriCombiNamesList.txt. Make sure this is saved to the Sysexfiler folder (it might be saved to a subfolder if you have selected one from within the program. If necessary, move it.) When the Kronos conversion is run again, this file will be loaded.



For Triton Program names, the process is similar. First load **All Triton Program** Banks.

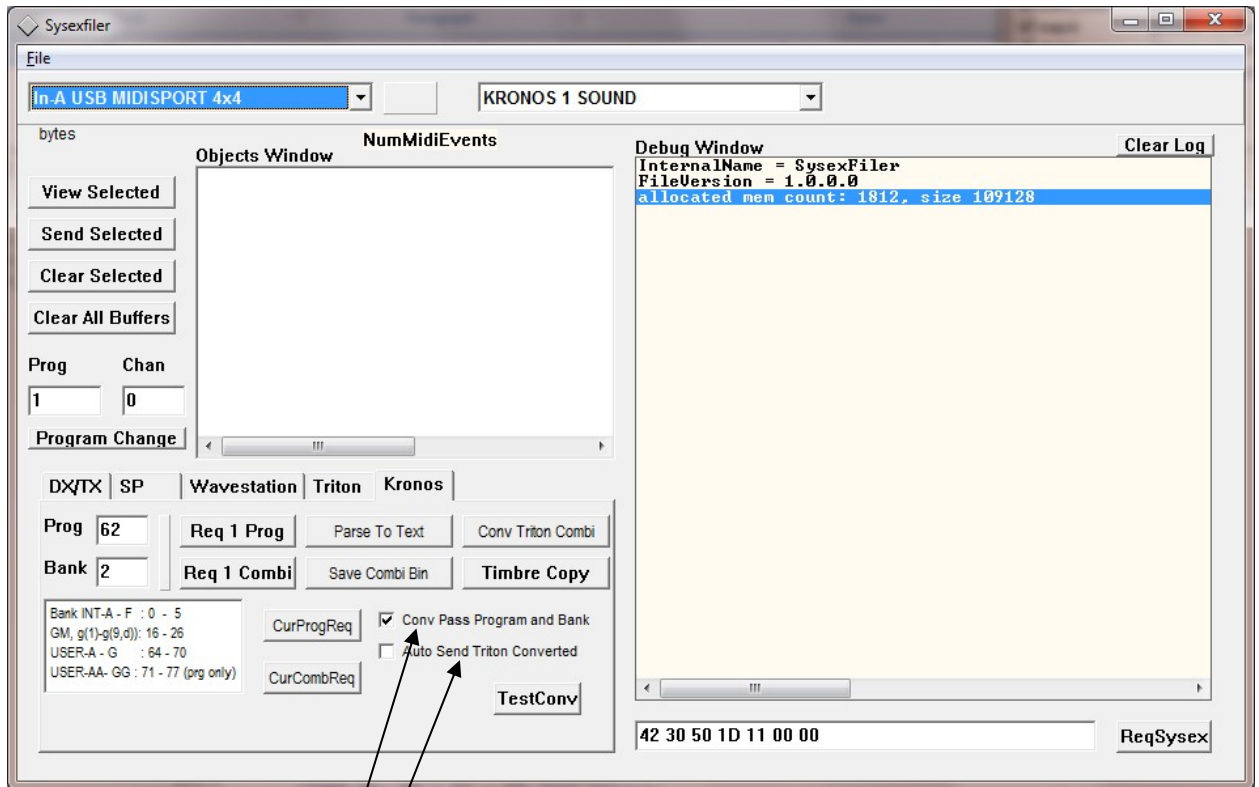


This time click the **AllProgText** button, which will write out a file named "TriProgNamesList.txt".

For both of these files, be sure they are in the same folder as SysexFiler.exe – it is possible they will be written somewhere else if you have saved a Sysex file to some other folder. Move them if necessary.

Note: You must exit the SysexFiler program and re-start it for the updated combi and program names files to be loaded. The setting of names is a one-time process unless you change the Triton's programs.

## Other Options



### Program Number Passing

If the checkbox “Conv Pass Program Number and Bank” is checked (on the Kronos tab), the Triton’s original program and bank numbers will be inserted into the converted Kronos Combi. Normally these have no meaning in the Kronos, but the option is there in case there could be a reason to use it (perhaps someday there will be a Triton program converter too). The default (unchecked) behavior is to fill the programs with Kronos Int-B-001 (arbitrary non-zero value).

### Auto Send

The “Auto Send Triton Converted” checkbox will cause converted Kronos Combi’s to be sent to the Kronos by MIDI immediately upon conversion. Since the Combi is written to the Kronos edit buffer only, there is little risk of using this, unless you have done some editing on the Kronos and forgot to save it.