

# SysexFiler -- General Help

by Tim Godfrey

Version 1.6.0 Dec 2016

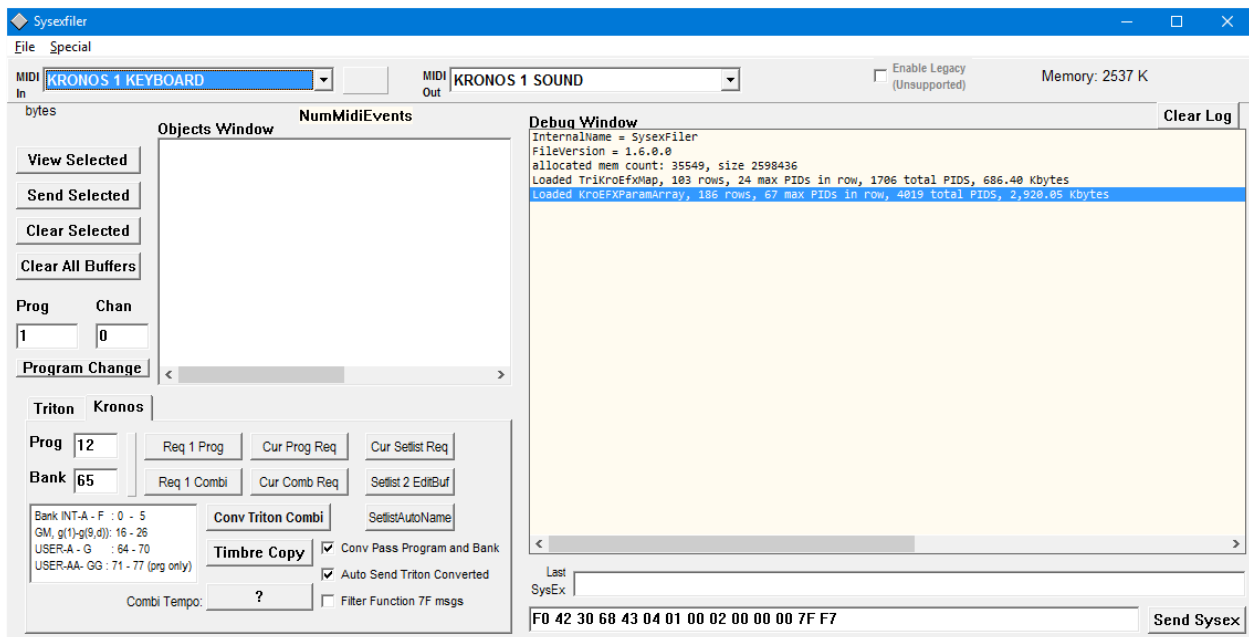
SysexFiler is a general purpose Sysex manager for Windows, extended to perform some specific conversion tasks for a few synths. It has special capabilities for the Korg Triton and Kronos (see additional help files for specific details)

This is more of a research tool than a polished program, and it was not intended for general use. However some of the functions are not easily accomplished otherwise (to my knowledge).

## Installation:

This program does not use an installer and does not make changes to your system. Copy the contents of the ZIP to a folder you create wherever you would like. Run the executable "SysexFiler.exe".

## Startup:



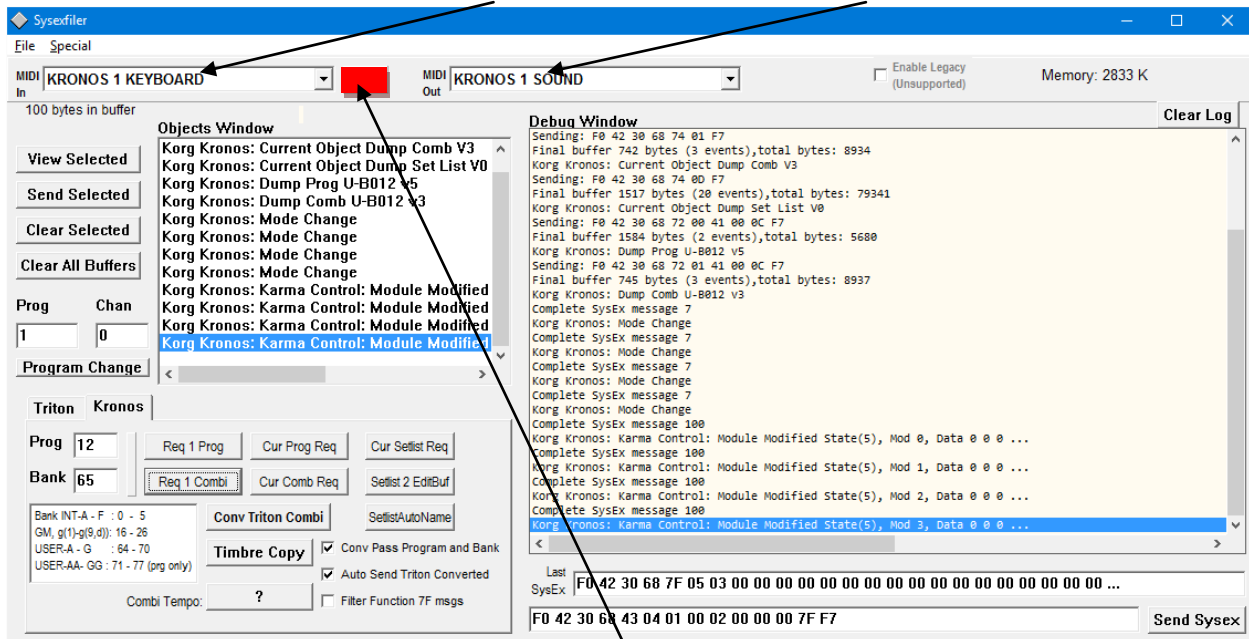
Configure the Input and Output MIDI ports to match your devices. For Triton to Kronos conversions, the Input MIDI should be connected to the Triton, and the Output MIDI to the Kronos. (Note: you can also perform conversion by loading and saving Sysex files if you can't use MIDI). Use the USB MIDI driver for the Kronos if possible (it will probably show up as "KRONOS 1 SOUND").

SysexFiler only handles SysEx messages. Note on/off, Continuous Controllers, RealTime messages are ignored.

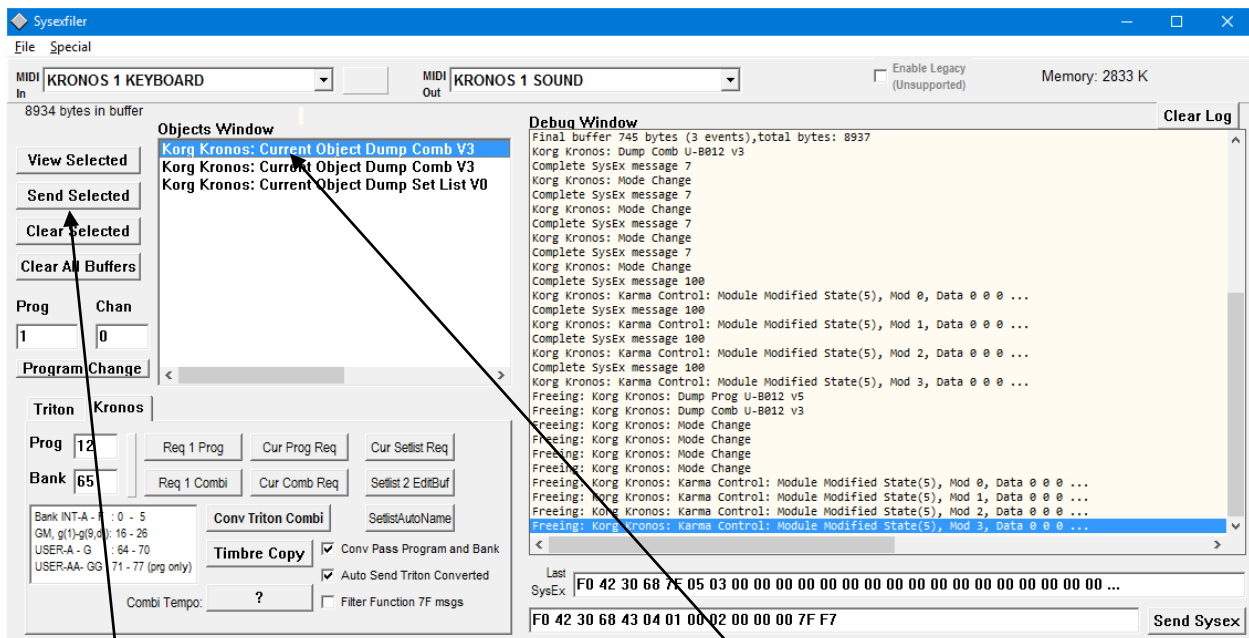
## File Menu:

From the File Menu, you can save and load objects as Sysex binary, or load CSV (text) files.

Sysexfiler is always “listening” on the input port. It sends messages to the output port

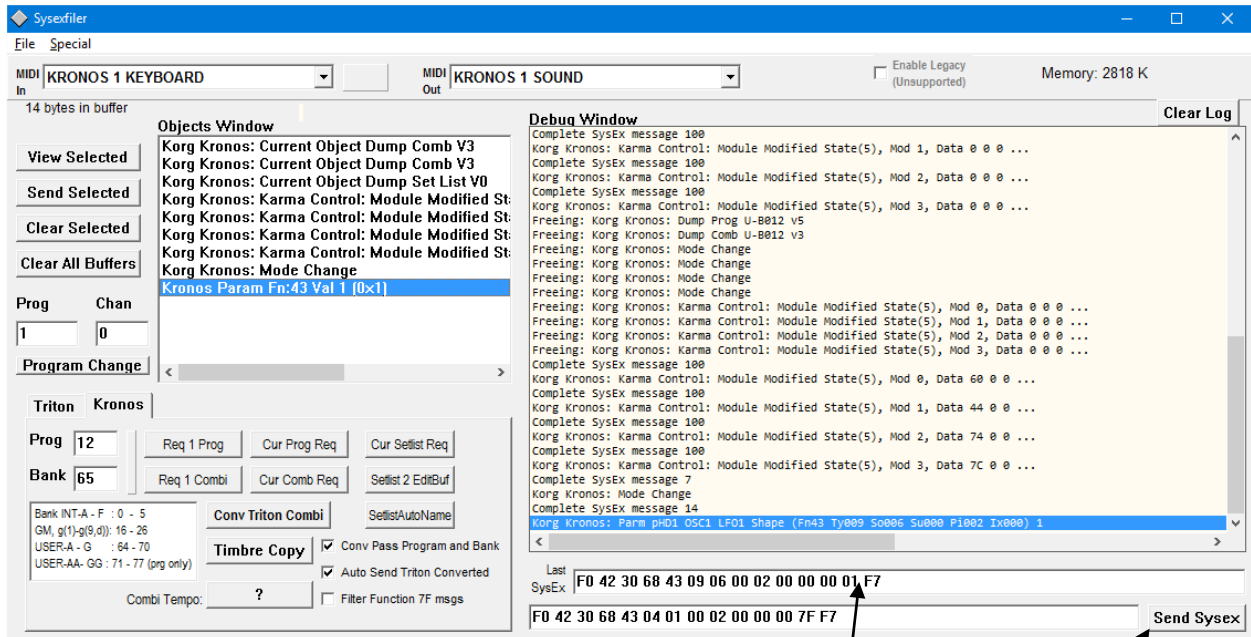


During bulk reception, a red indicator will appear here. For short messages it is too fast to be seen.



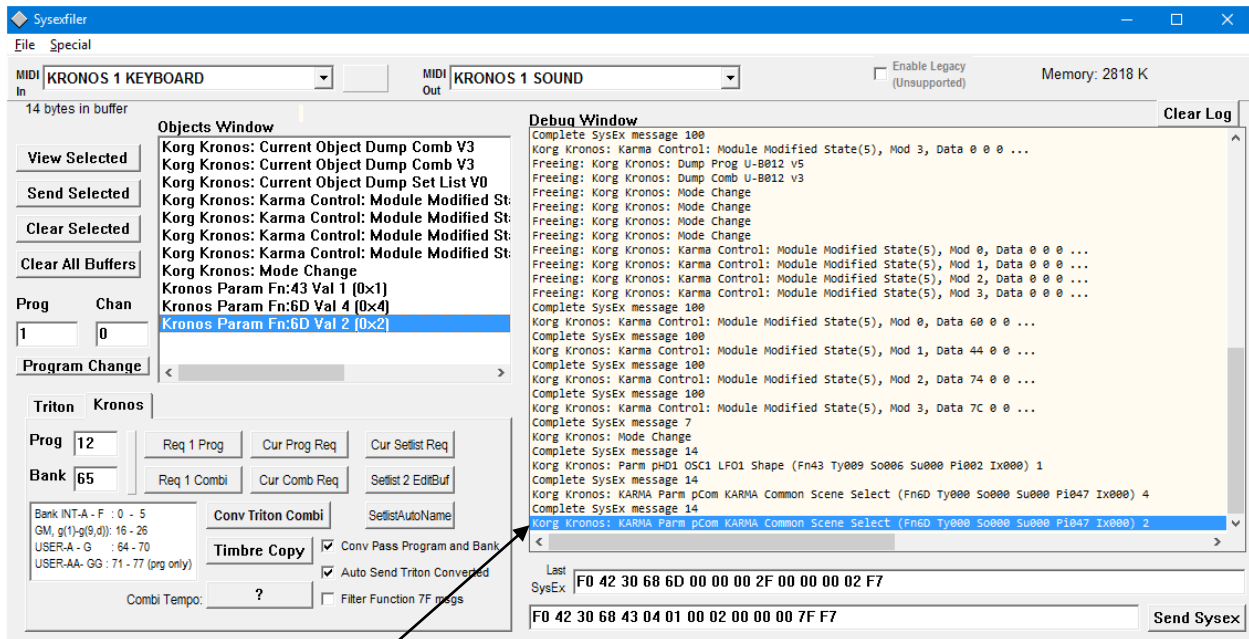
Every sysex message received becomes an object in the left listbox.

The selected object can be viewed (in the debug window), Sent (out the MIDI output port), or cleared using the buttons on the left. (Clear All Buffers removes all objects from memory)

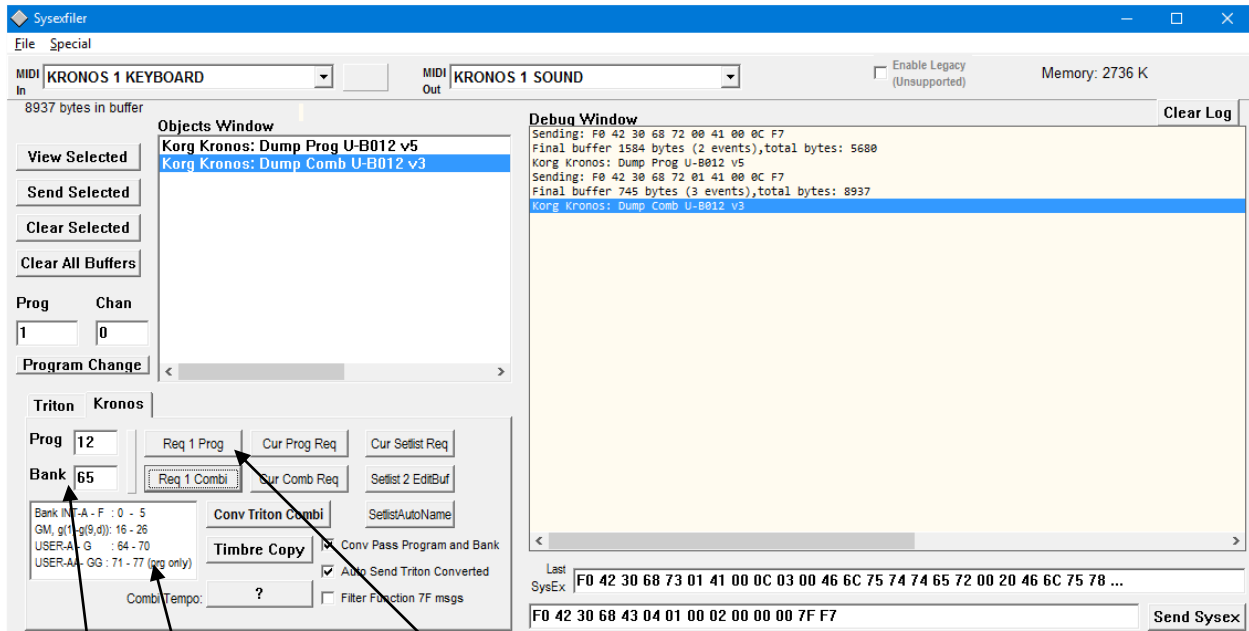


Incoming messages are displayed in Hex in a textbox below the debug window. This textbox is updated with every received message. Shorter messages (like Parameters) will fit. If the message won't fit, it is truncated with "...".

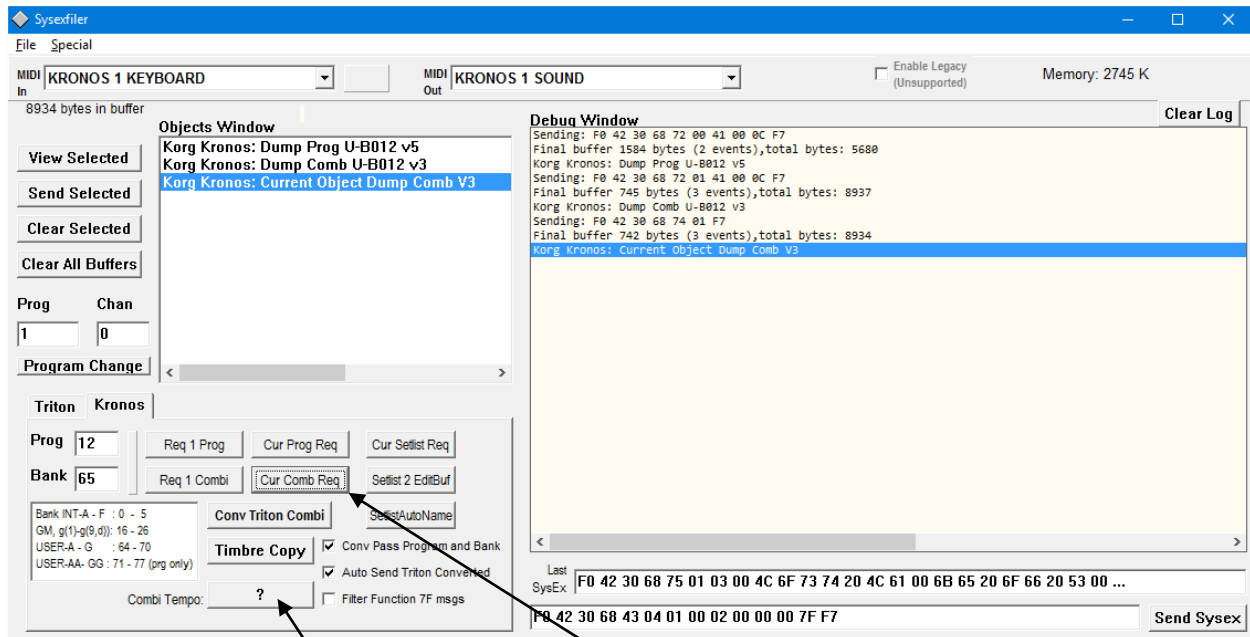
You can select parts of these messages, copy paste into the window below, and send them from the lower textbox (using the Send Sysex button). The send Sysex textbox will not be changed by new data unless you edit it.



To some extent, parameter messages are decoded in the Debug window. Note that many parameters appear to be undocumented. This decoding is a work in progress, and will be updated as new information is discovered. Unknown parameters are displayed as Parm ?, followed by the value.



Individual Programs or Combis can be requested by entering the appropriate program number and bank number (Prog works for both Prog and Combi requests). This assumes the MIDI out is going to the same instrument. Hints for the bank number are in a text box below.



If a Combi object is highlighted in the edit buffer (use CurCombReq to request), clicking on the Combi Tempo will display the actual Tempo value from that Combi. (If you are in an external clock mode, the Kronos won't display the tempo, rather it changes to "□ = EXT").

From the File Menu, you can save/load objects as Sysex binary, or CSV (text) files.

**ToolTips** are available for many objects in the UI. Hover the mouse over the object to see tool tips.

SysexFiler has been tested under Windows XP, Windows 7, and Windows 10.